

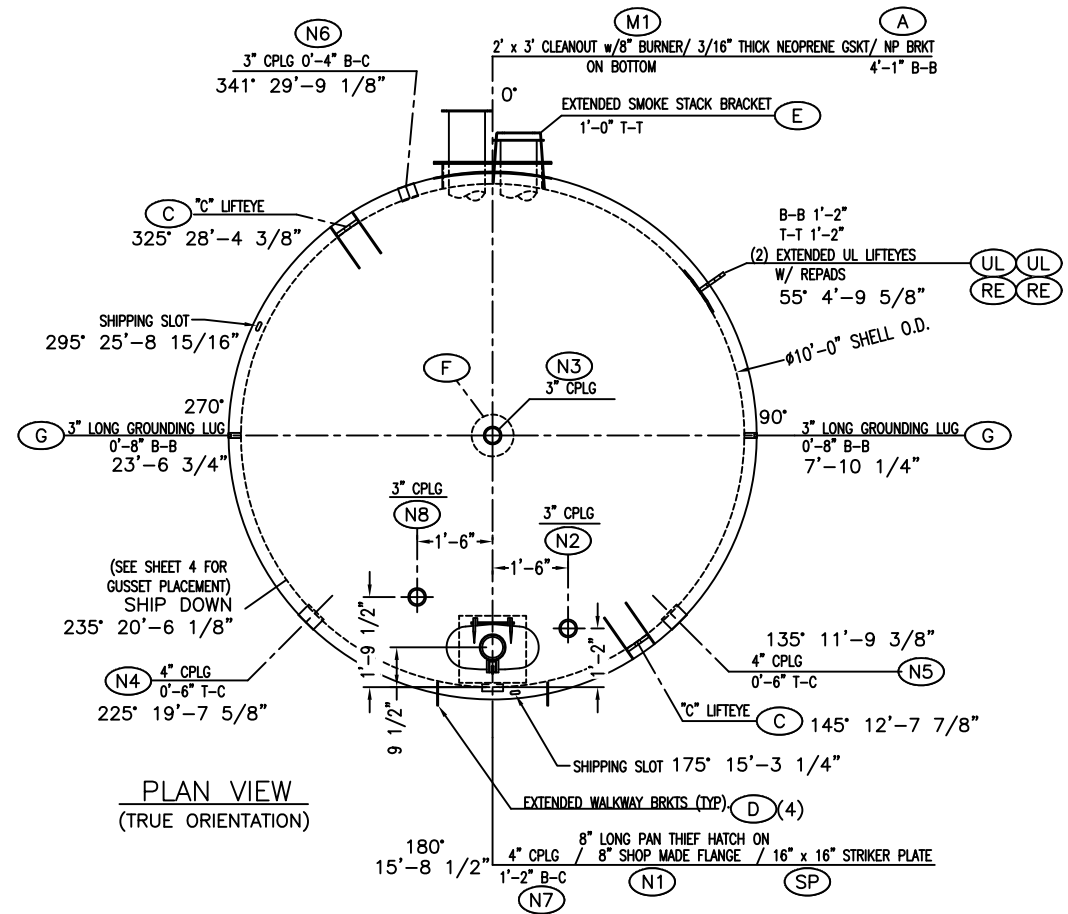


API-12F Vertical Steel Storage Tank with 2" Insulation

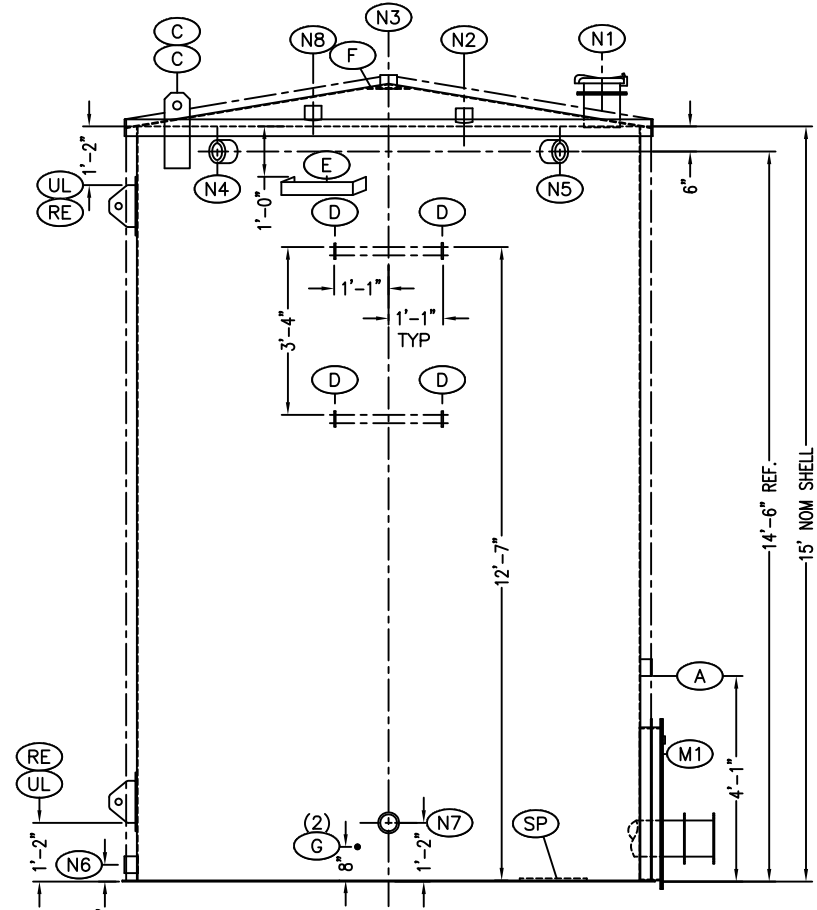
Storage Capacity 210 BBL

Tank Size 10' Diameter x 15' Straight Shell

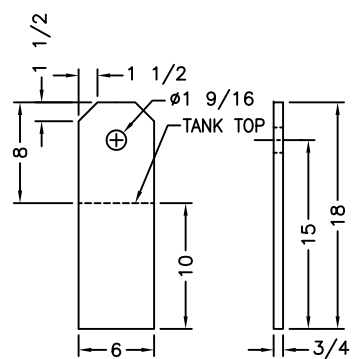
Contact our Sales Department for Pricing



PLAN VIEW
(TRUE ORIENTATION)



ELEVATION VIEW
(NOT TRUE ORIENTATION)



"STYLE-C" 3/4" THK
LIFTING EYE DETAIL
MAT'L: A36
2" INSULATION

CUSTOMER _____
 SIZE 210 BBL (10 X 15)
 SER# _____
 PAINT CARLSBAD TAN
 INTERIOR ENVIROLINE 2900

		API SPEC 12F	PART NUMBER	REV 1
		SERIAL NUMBER	S	
		YEAR BUILT	??/20??	
		NOMINAL DIAMETER	10'-0"	
		NOMINAL HEIGHT	15'-0"	
		NOMINAL CAPACITY	210 BBL	
		BOTTOM THICKNESS	1/4" TYPE FLAT	
		SHELL THICKNESS	3/16"	
		DECK THICKNESS	3/16"	
		DESIGN PRESSURE	+16 / -1/2 OZ.	

API NAMEPLATE
NTS

SYM. QTY.		DESCRIPTION	MODEL NUMBER	WELD DETAIL	MATERIAL
1	1	TOP HEAD: 10'-7" O.D., 3/16" NOM. - (FLAT LAY-OUT)-SEE DETAIL SHEET 3		HD	SA-36
1	1	BOTTOM HEAD: 10'-7" O.D., 1/4" NOM. - FLAT BOTTOM		HG/BA	SA-36
1	1	SHELL: 10'-0" O.D. x 15'-0" TALL, 3/16" NOM. (SEE BAND SCHEDULE)		BA	SA-36
A	1	NAMEPLATE BRACKET EXTENDED 2 1/2"	PINV 10051		SA-36
A	1	API NAMEPLATE	PINV 07531		ALUMINUM
UL	2	EXTENDED UL LIFTEYE	PINV 10020B		SA-36
SP	1	16" x 16" x 1/4" STRIKER PLATE	PINV 30037		SA-36
D	4	EXTENDED WALKWAY BRACKET	PINV 10043C		SA-36
1	1	BOLT KIT FOR 24" x 36" CLEANOUT	PINV 06007		ASTM A-307
1	1	BOLT KIT FOR 8" THIEF HATCH	PINV 06005		ASTM A-307
E	1	EXTENDED SMOKE-STACK BRACKET	PINV 10071B		SA-36
G	2	3" LONG GROUNDING LUG	PINV 10010A		SA-36
RE	2	1/4" x 8" x 16" REPAD	PINV 10003H		SA-36
C	2	"C" STYLE LIFTEYE WITH SUPPORTS (SEE DETAIL SHEET 5)	PINV 10022		SA-36
F	1	1/4" x 10" OD REPAD 4 1/16" CENTER HOLE	PINV 10040B		SA-36
9	9	TOP SHIPPING GUSSETS (SEE DETAIL SHEET 4)	PINV 10041K5		SA-36
9	9	BOTTOM SHIPPING GUSSETS (SEE DETAIL SHEET 4)	PINV 10041K6		SA-36

SYM. QTY.		DESCRIPTION	SERVICE	COMPONENT	PROJECTION OUTSIDE	PROJECTION INSIDE	WELD SIZE "A" "B"	WELD DETAIL	MATERIAL
M1	1	24" x 36" CLEANOUT EXTENDED 3"-SEE DETAIL SHEET 2 w/8" BURNER & 3/16" THICK NEOPRENE GASKET	ACCESS	CLEANOUT	PER DETAIL		3/16" 3/16"	ME	SA-36
N1	1	8" THIEF HATCH FLANGE (PINV 06043F)	LEVEL/EM. VENT		6"				SA-36
	1	8" SCH. 40 SMLS PIPE							SA-106 GR B
	1	8" LONG PAN THIEF HATCH w/NEOPRENE GASKET						(BOLTED)	ALUMINUM
N2	1	3" FNPT COUPLING	FILL	COUPLING	3"		3/16" 3/16"	AE	API-5L GR B
N3	1	3" FNPT COUPLING	AUXILIARY	COUPLING	3"		3/16" 3/16"	AC	API-5L GR B
N4	1	4" FNPT COUPLING	OVERFLOW	COUPLING	3"		3/16" 3/16"	AC	API-5L GR B
N5	1	4" FNPT COUPLING	OVERFLOW	COUPLING	3"		3/16" 3/16"	AC	API-5L GR B
N6	1	3" FNPT COUPLING	DRAIN	COUPLING	3"		3/16" 3/16"	AC	API-5L GR B
N7	1	4" FNPT COUPLING	PIPE LINE	COUPLING	3"		3/16" 3/16"	AC	API-5L GR B
N8	1	3" FNPT COUPLING	VENT	COUPLING	3"		3/16" 3/16"	AE	API-5L GR B

SYM. QTY.		DESCRIPTION	MODEL NUMBER	MATERIAL
1	1	8" BURNER KIT	PINV 60240W	VARIOUS
1	1	6" SMOKESTACK (FOR 15'-0" TALL TANK)		SA-36

NOTES:

- SHOP TEST TANK BY AIR PRESSURE TO 2 PSI.
- DIMENSIONAL TOLERANCE: ± 1/8" UNLESS OTHERWISE NOTED. OVERALL HEIGHT OF SIDEWALL: ± 3/8".
- TOLERANCE OF STEEL PLATES: -0.01" + 0.03"

COATINGS:

SURFACE PREP:
 INTERIOR SHALL BE CLEAN AND FREE OF RUST, 100% OF INTERIOR STEEL SHALL BE BLAST CLEANED PER SSPC-SP10/NACE 2, NEAR WHITE TO ACHIEVE 3-5 MIL ANCHOR PROFILE

COATING:
 APPLY A STRIPE COAT OF ENVIROLINE 2900 TO ALL WELDS 2-10 MILS DRY.

APPLY ENVIROLINE 2900 (100% SOLIDS) USING PLURAL COMPONENT SPRAY EQUIPMENT TO 18-22 MILS ON FLOOR OF TANK & 3'-0" UP SIDEWALL. 15-18 MILS ON REMAINDER OF SIDEWALL & TANK TOP.

HOLIDAY TEST WITH HIGH VOLTAGE PULSATING HOLIDAY DETECTOR USING 100 VOLTS PER MIL THICKNESS.

COLOR: BLUE

EXTERIOR SIDEWALL & TOP:

CLEAN SURFACE FREE OF RUST, SLAG, ETC.
 1ct. SHERWIN WILLIAMS KEM FLASH PRIMER
 1.5 MILS DRY FILM THICKNESS.

EXPOSED PARTS:

1 ct. SW KEM 4000 ACRYLIC ENAMEL.
 2.0-2.5 MILS DRY FILM THICKNESS.
 COLOR: CARLSBAD TAN

EXTERIOR BOTTOM:

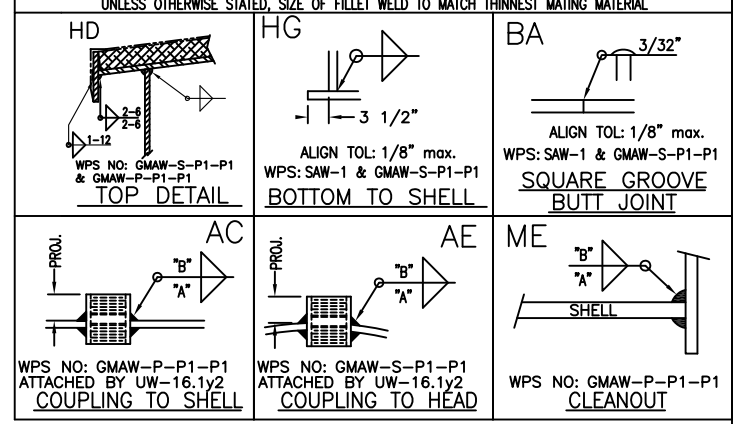
1 COAT OF ASPHALT.

APPROVED FOR PRODUCTION:

DATE:

DWG	PART.	DESCRIPTION	CHKD. BY	DATE	DWN. BY
△	△	ADDED C LIFTEYE SUPPORTS.	J.F.	3/15/13	JK
△	△	CHANGED INTERIOR COATING TO ENVIROLINE 2900.	J.F.	12/21/12	JK
△	△	REMOVED 3/4" & 2" COUPLING FROM BURNER CLEANOUT LID. ADDED 1" COUPLING AND MOVED BOTH 1" COUPLINGS TO TOP.	JK	12/6/12	TGF
△	△	ROTATED LIFTEYES FOR SHIPPING PURPOSE. CHANGED ALL BANDS TO 5'-0" WIDE.	T.B	11/13/12	JF

WELD DETAILS



EXTERIOR INSULATION:

TOP: 2" FOAM BOARD WITH 3/16" THICK FIBERGLASS OVERLAY (1C3R-2C3) WITH NON-SKID SURFACE. COLOR: CARLSBAD TAN

SIDEWALL:

2" FOAM BOARD WITH COVERING OF .016" CORRUGATED, EMBOSSED ALUMINUM JACKET WITH VAPOR BARRIER, AND STAINLESS STEEL SUPPORT BANDS AS REQUIRED. COLOR: CARLSBAD TAN

BAND#	RING THK & WIDTH
#1	3/16" -- 5'W
#2	3/16" -- 5'W
#3	3/16" -- 5'W

DESIGN CONDITIONS	MATERIAL CONSTRUCTION
PRESSURE: +16 / -1/2 OZ.	SHELL MATERIAL: 3/16" SA-36 STEEL
TEMPERATURE: AMBIENT	TOP MATERIAL: 3/16" SA-36 STEEL
CONTENTS: OIL & WATER	BOTTOM MATERIAL: 1/4" SA-36 STEEL
SPECIFIC GRAVITY: 1.0 (MAX)	BOLTING: ASTM A-307
EMPTY WEIGHT: 5,800 LBS. (NOM.)	COUPLINGS: COMPLY WITH API 5L
CAPACITY: 8,810 GAL/210 BBL (NOM)	MFG. SPEC.: API-12F 12th EDITION

SCALE: 3/8"=1'-0" | DATE: 8/16/12 | CHK'D BY: J.F. | DWN.BY: JK
Palmer MFG. & TANK INC.
 GARDEN CITY, KANSAS.

PART NUMBER:	REV 1
DRAWING NUMBER:	REV L
10'Ø X 15' SIDEWALL	
SHEET 1 OF 5	