

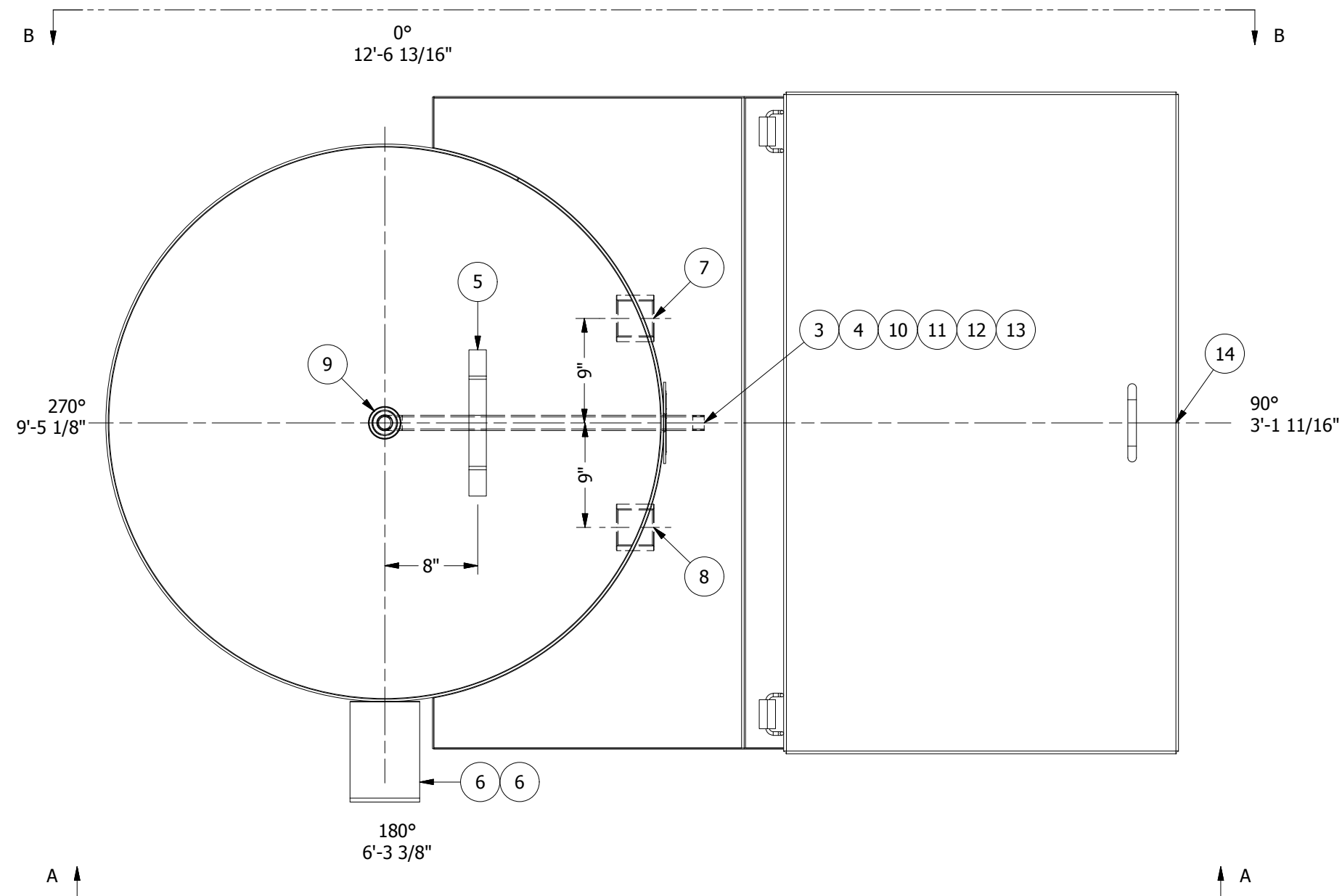


Water Pressure Tank With Pit

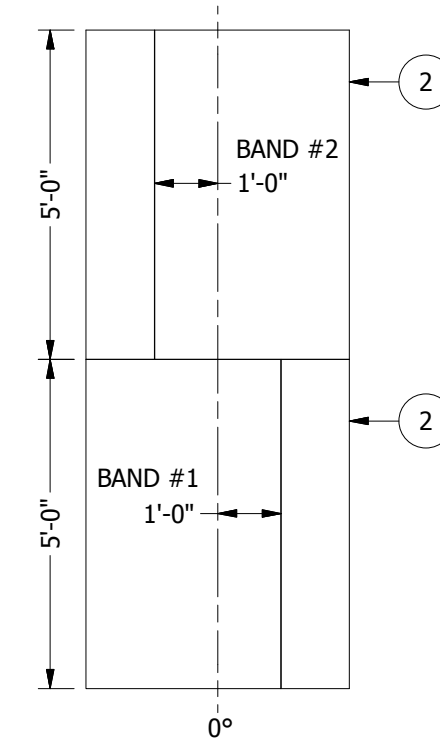
Storage Capacity 900 Gallons

Tank Size 4' Diameter x 10' High Sidewall with Pit

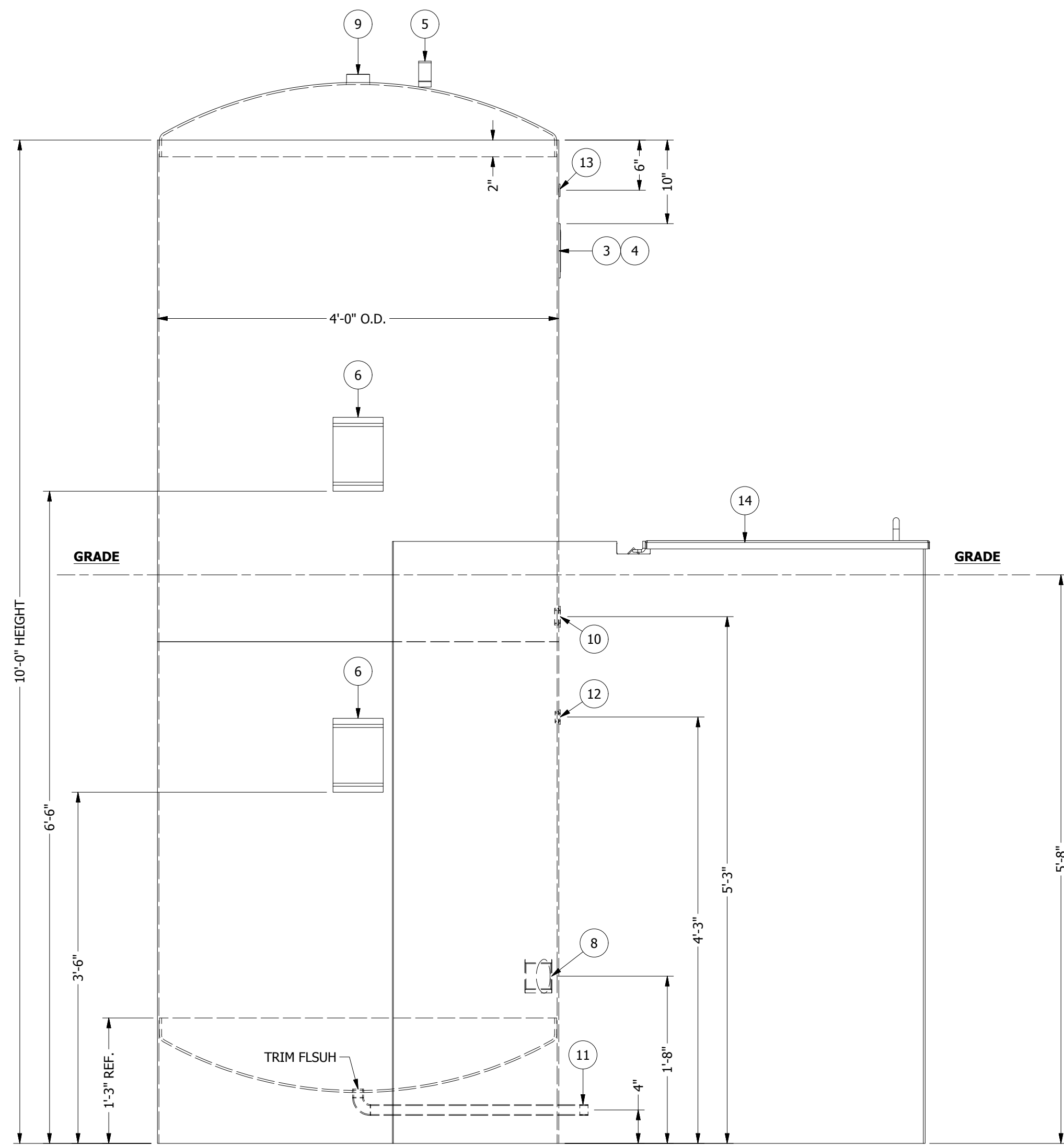
Contact our Sales Department for Pricing



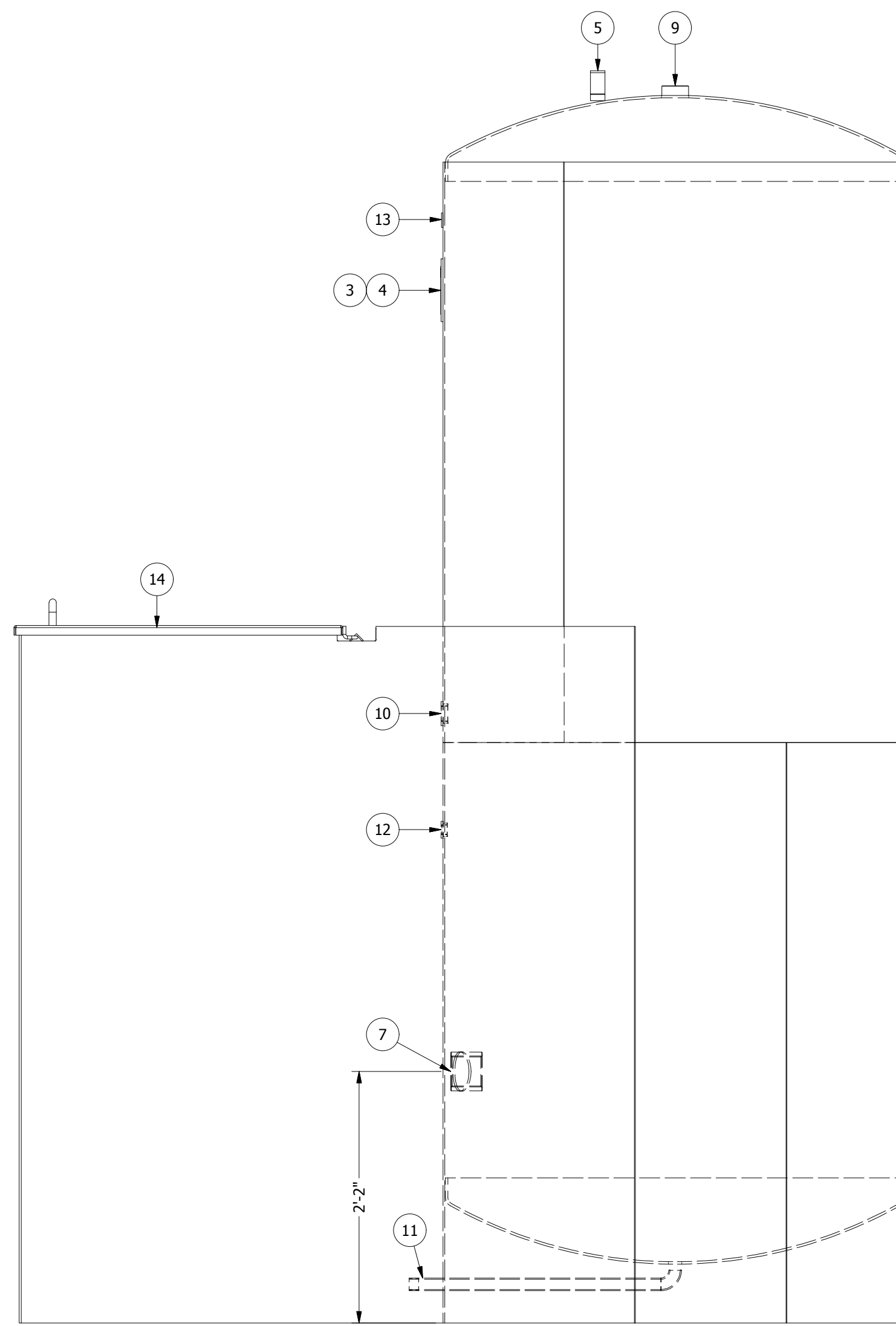
PLAN VIEW
SCALE 1"=1'-0"



VIEW B-B
BAND CALLOUT
SCALE 1/35



VIEW A-A
SCALE 1"=1'-0"



VIEW B-B
SCALE 1"=1'-0"

PARTS LIST						
ITEM	QTY	PART#	SHT#	DESCRIPTION	SERVICE PROJ.	MATERIAL
1	2	339651		HEAD, STD FD DOME, 3'-11 1/2" O.D. X 1/4" THK. X 2" SKIRT		SA-516 GR 70
2	2	342073		BAND, 4'-0" D. X 5'-0" H. X 3/16" THK. (12'-6 1/8" S.C.L.)		SA-36
3	1	338205		BRACKET, NAMEPLATE		SA-36
4	1	338215	4	NAMEPLATE, VERTICAL TANK		ALUMINUM
5	1	338208		LIFTEYE, TYPE B		SA-36
6	2		5	FORK LOOP		SA-36
SCHEDULE OF FITTINGS						
ITEM	QTY	PART#	SHT#	DESCRIPTION	SERVICE PROJ.	MATERIAL
7	1	338604		COUPLING, 3" MERCHANT		1" SA-105
8	1	338604		COUPLING, 3" MERCHANT		1" SA-105
9	1	339484		COUPLING, 2" MERCHANT		1" SA-105
10	1	338962		COUPLING, WELD-IN TANK FLANGE, 1-1/4" SERIES 106		SA-105
11	1		6	NOZZLE ASSEMBLY, 1"	DRAIN	CARBON STEEL
12	1	338876		COUPLING, WELD-IN TANK FLANGE, 3/4" SERIES 104		SA-105
13	1	339279		COUPLING, WELD-IN TANK FLANGE, 1/2" SERIES 103		SA-105
ITEMS TO SHIP LOOSE						
ITEM	QTY	PART#	SHT#	DESCRIPTION	SERVICE PROJ.	MATERIAL
14	1		7	PIT ASSEMBLY		CARBON STEEL

NOTES:

- THE TANK IS TO BE POSITIVELY VENTED TO THE ATMOSPHERE AT ALL TIMES. IT IS THE RESPONSIBILITY OF THE CUSTOMER TO DETERMINE THE PROPER SIZE OF VENT TO PREVENT THE TANK FROM BEING OVER PRESSURIZED DURING FILLING AND TO PREVENT THE TANK FROM COLLAPSING DURING REMOVAL OF THE PRODUCT.
- ALL OPENINGS, INCLUDING FACE OF FLANGES, CONDUIT ENTRANCES, THREADED OPENINGS, & MECHANICAL SURFACES SHALL BE PLUGGED OR COVERED TO PROPERLY PROTECT FROM DAMAGE AND TO KEEP CONNECTIONS & INTERNALS CLEAN & DRY DURING STORAGE & SHIPPING.
- FLANGES INSTALLED IN THE SHELL WILL BE INSTALLED W/BOLT HOLES STRADDLING THE TANKS VERTICAL OR HORIZONTAL CENTER LINE. FLANGES INSTALLED IN THE HEADS WILL BE INSTALLED W/BOLT HOLES STRADDLING THE 0°-180° & 90°-270° CENTER LINES.
- FACTORY TEST TANK FOR LEAKS WITH LEAK TEST BY AIR PRESSURE. APPLY AIR PRESSURE IN TANK TO 1 1/2 PSI. HOLD PRESSURE AND APPLY SEAM TEST SOLUTION TO EACH WELD TO ASSURE NO LEAKS ARE PRESENT.
- ALL DIMENSIONS SHOWN AS NOMINAL (NOM) ARE ± 1/2%. ALL OTHER DIMENSIONS ARE ± 1/8" UNLESS OTHERWISE NOTED.
- BASE THICKNESS IS **NOT** INCLUDED IN NOZZLE AND OVERALL HEIGHT DIMENSIONS.
- HYDROTEST TANK AT 120 PSI.
- PLUG ALL OPENINGS FOR STORAGE (PVC PLUGS).

COATINGS:

INTERIOR:

INTERIOR TANK SURFACES SHALL BE CLEANED FREE OF RUST, SLAG, & ALL OTHER FOREIGN MATTER.

EXTERIOR:

5'-8" LOWER SHELL & 5'-8" LOWER PIT ASSEMBLY:
CLEAN SURFACE FREE OF RUST, SLAG, & ALL FOREIGN MATTER.
1ct. TRANCOAT 161.
10.0-15.0 M.D.F.T.

INTERIOR SKIRT & EXTERIOR DOME BOTTOM:
CLEAN SURFACE FREE OF RUST, SLAG, & ALL FOREIGN MATTER.
1ct. SHERWIN WILLIAMS KEM FLASH PRIMER.
1.5-2.0 M.D.F.T.

4'-4" ABOVE SHELL, 4" ABOVE PIT ASSEMBLY & TOP:
1ct. SHERWIN WILLIAMS KEM FLASH PRIMER.
1.5-2.0 M.D.F.T.
1ct. SHERWIN WILLIAMS KEM 4000.
3.0-4.0 M.D.F.T.
COLOR: WHITE

Palmer PIPE, & TANKS, INC. GARCON CITY, IA 50445-9136			
TAG NO. WPT-900	SERIAL NUMBER	DATE BUILT	XX/20XX
DIAMETER 4'-0"	HEIGHT	10'-0"	
CONTENTS AIR/WATER			
CAPACITY 900 GAL.	TEMP. AMBIENT	S.G. 1.0	
PRESSURE DESIGN 120 PSI	WORKING 80 PSI		
MATERIAL SA-36	TOP THK. 1/4"		
BOTTOM THK. 1/4"	SHELL THK. 3/16"		
CUSTOMER			
CUSTOMER P.O.			

DESIGN CONDITIONS	
DESIGN PRESSURE: 120 PSI	EMPTY WEIGHT: 2,200 LBS.
DESIGN TEMP: AMBIENT	NOM. CAPACITY: 900 GAL.
OPERATING PRESSURE: ATMOS.	OPER. CAPACITY: ---
OPERATING TEMP: AMBIENT	RADIOGRAPHIC TEST: ---
EXTERNAL PRES: ---	CORROSION ALLOWANCE: ---
M.D.M.T.:	SEISMIC: ---
CONTENTS: AIR/WATER	WIND: ---
SPECIFIC GRAVITY: 1.0	MECH SPEC: PALMER
Palmer MFG. & TANK INC.	
TANK NAME: WATER PRESSURE TANK	DATE: 7/3/2019
	DRAWN BY: C.C.
	CHECKED BY:
	SHEET NUMBER:
	S.D. NUMBER: WPT-900
	PART NUMBER: 340765
	DRAWING NUMBER: WPT-900A-1
	REV: 0
	SHEET: 1 OF 7

REV	DESCRIPTION	CHK BY	DATE	DWG BY
0	RELEASED FOR PRODUCTION. UPDATED TO PALMER STANDARD.		8/1/2019	C.C.

REVISION HISTORY

4'-0" X 10'-0" STEEL TANK