

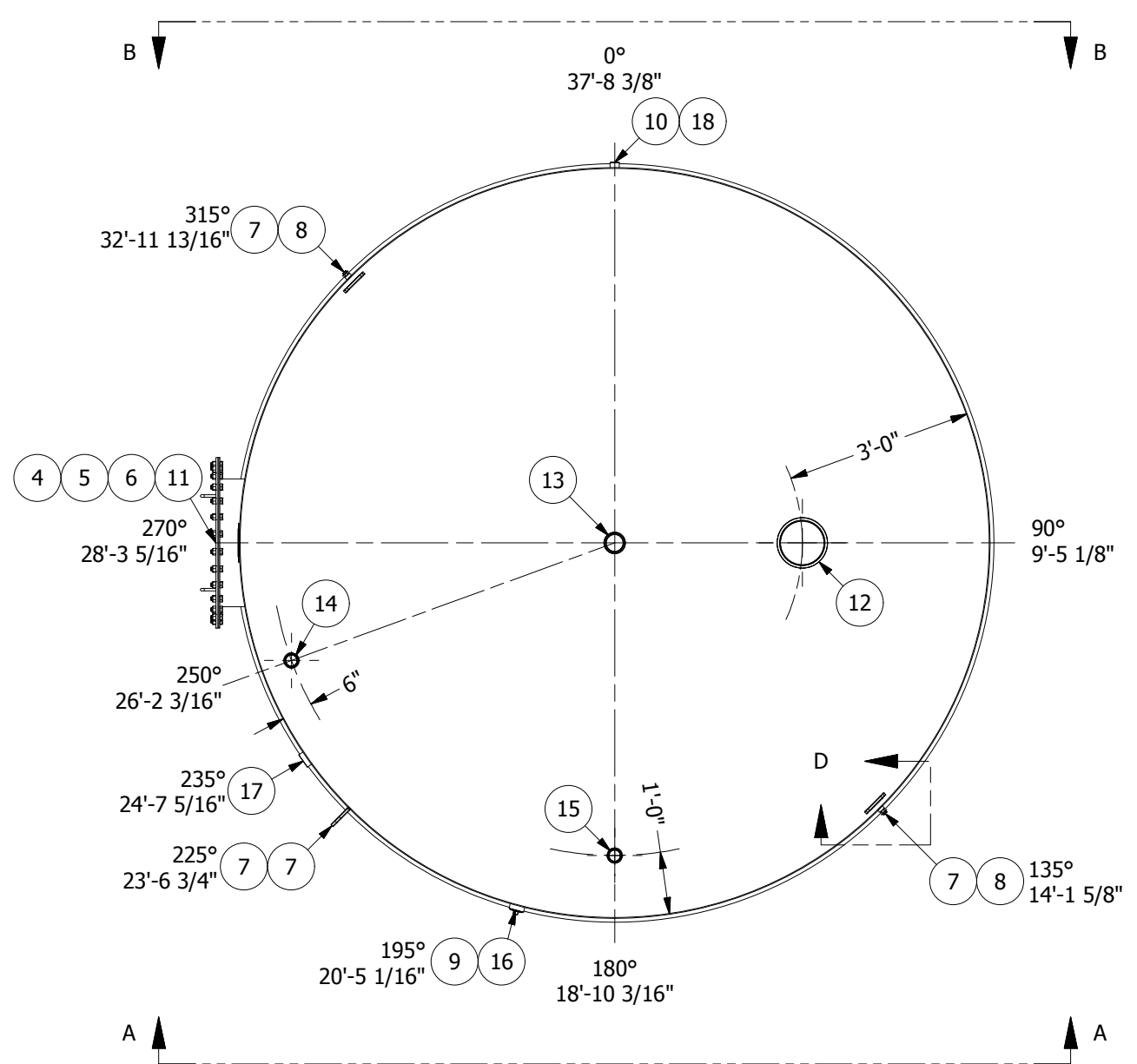


Certified UL-142 Double Wall Tank for Fuel Storage

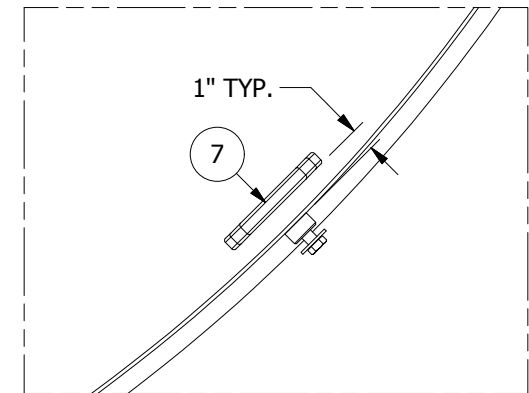
Storage Capacity 10,000 Gallons

Tank Size 12' Diameter x 12' High Sidewall

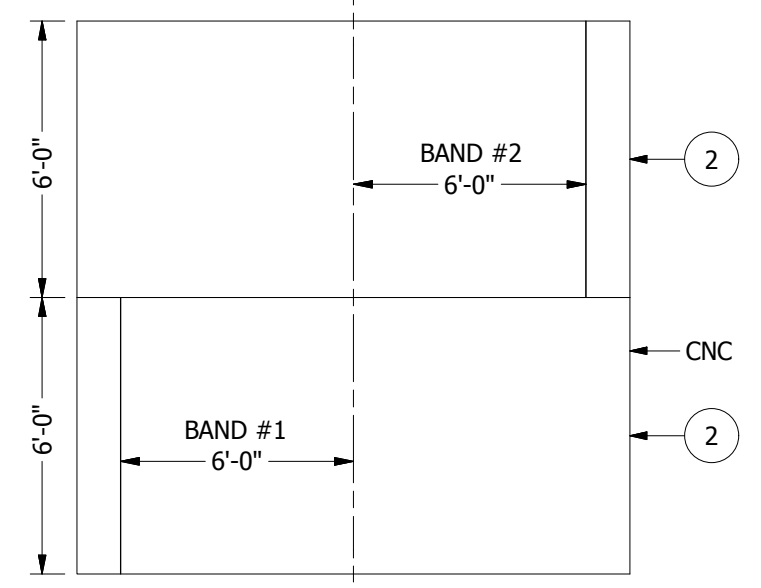
Contact our Sales Department for Pricing



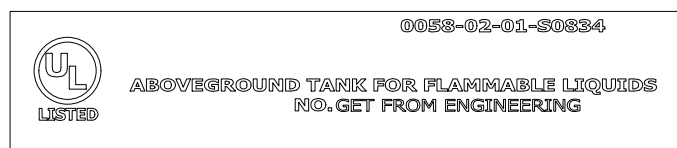
PLAN VIEW
SCALE 3/8"=1'-0"



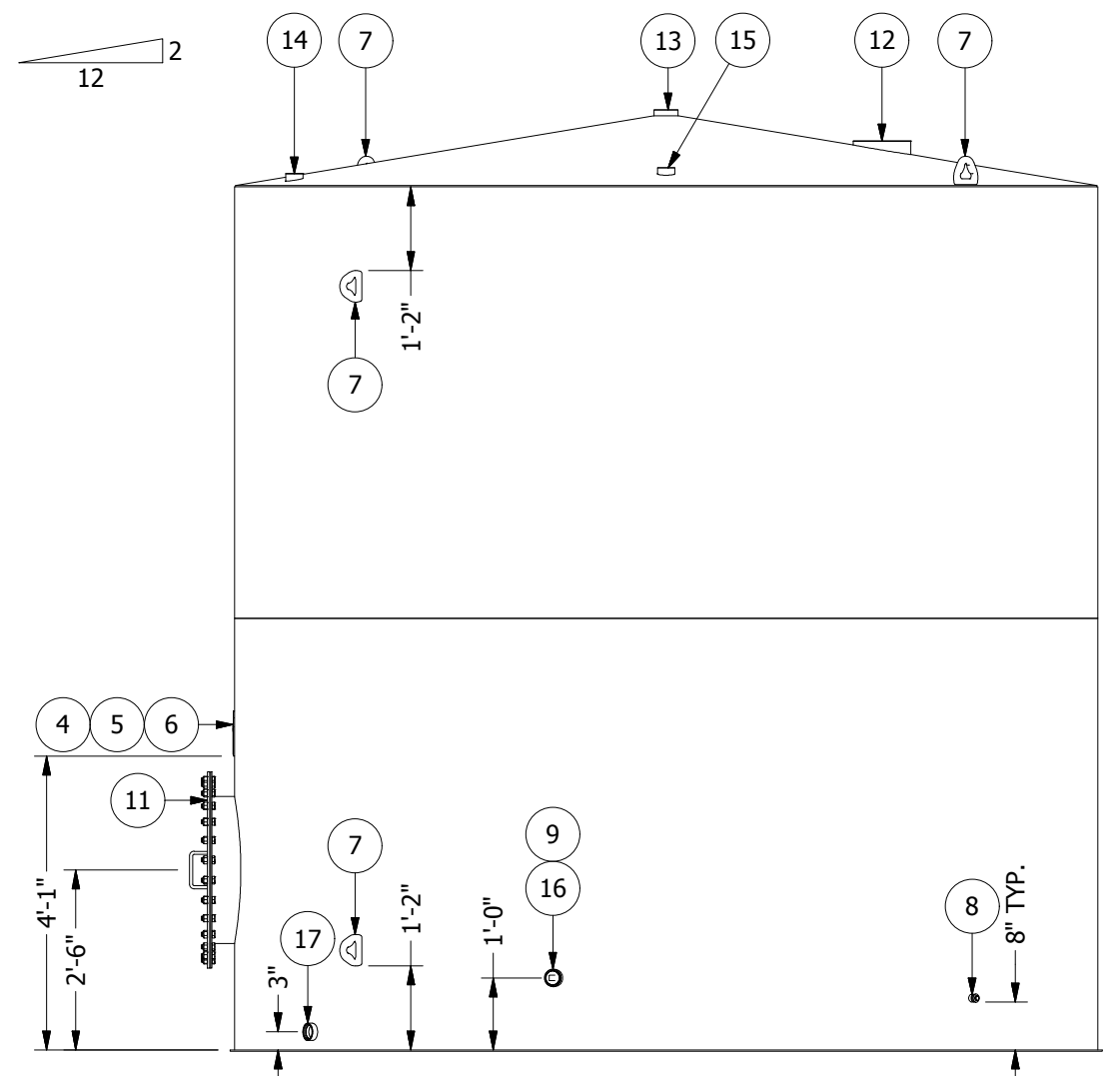
DETAIL D
SCALE 1/8



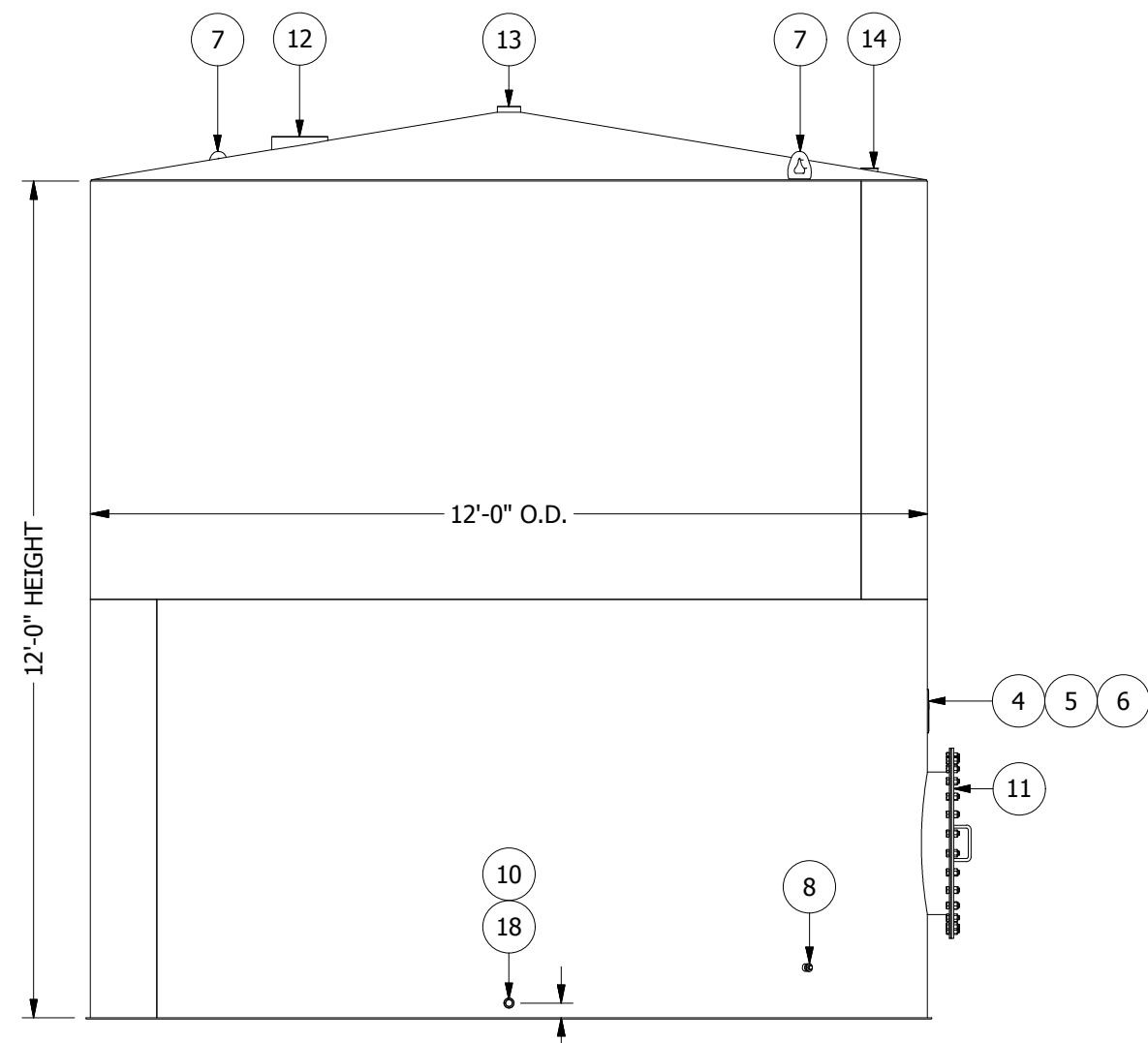
VIEW B-B
BAND CALLOUT
SCALE 1/50



Palmer MFG. & TANK INC. GARDEN CITY, KS 600-855-9136	
TAG NO.	_____
SERIAL NUMBER	_____ DATE BUILT ____/____/____
DIAMETER	12'-0" HEIGHT 12'-0"
CONTENTS FUEL	_____
CAPACITY	10,099 GAL. TEMP. AMBIENT S.G. 1.0
PRESSURE, DESIGN	ATMOS. WORKING ATMOS.
MATERIAL	SA-36 TOP THK. 3/16"
BOTTOM THK.	1/4" SHELL THK. 3/16"
CUSTOMER	_____
CUSTOMER P.O.	_____
THIS TANK REQUIRES EMERGENCY RELIEF VENTING. CAPACITY NOT LESS THAN 379,183 CUBIC FEET PER HOUR.	



VIEW A-A
SCALE 3/8"=1'-0"



VIEW B-B
SCALE 3/8"=1'-0"

PARTS LIST								
SYM	ITEM	QTY	PART#	SHT#	DESCRIPTION	SERVICE	PROJ.	MATERIAL
	1	1	338576		TOP, 12'-0" D. X 3/16" THK. (12'-1 5/8" F.L.O.)			SA-36
	2	2	338775		BAND, 12'-0" D. X 6'-0" H. X 3/16" THK. (37'-7 11/16" S.C.L.)	OUTER		SA-36
	3	1	338390		BOTTOM, 12'-1 1/2" D. X 1/4" THK.	OUTER		SA-36
NP	4	1	338337		BRACKET, UL NAMEPLATE			SA-36
NP	5	1	339791	4	UL LABEL, ABOVEGROUND SINGLEWALL			BRASS
NP	6	1	338215	4	NAMEPLATE, VERTICAL SINGLEWALL TANK	NAMEPLATE		ALUMINUM
LE	7	4	338382		LIFTEYE, PHOENIX FORGE MEDIUM			SA-105
GL	8	2	338155		GROUNDING LUG			CARBON STEEL
	9	1	339045		PLUG, SQUARE HEAD, 2"			MALLEABLE IRON
	10	1	338835		PLUG, SQUARE HEAD, 1"			MALLEABLE IRON

SCHEDULE OF FITTINGS								
SYM	ITEM	QTY	PART#	SHT#	DESCRIPTION	SERVICE	PROJ.	MATERIAL
M1	11	1		5	MANWAY, 24" API-650 SHELL	ACCESS	4"	VARIOUS
N2	12	1	342025		COUPLING, 8" FNPT HALF	EM. VENT	1 1/4"	API-5L GR B
N3	13	1	338143		COUPLING, 3" FNPT	CONSERVATION VENT	1"	API-5L GR B
N4	14	1	338153		COUPLING, 2" FNPT	CLOCK GAUGE	1"	API-5L GR B
N5	15	1	338153		COUPLING, 2" FNPT	FILL	1"	API-5L GR B
N6	16	1	338153		COUPLING, 2" FNPT	SPARE	1"	API-5L GR B
N7	17	1	338153		COUPLING, 2" FNPT	PUMP	1"	API-5L GR B
N9	18	1		6	COUPLING, 1" 3M W/ ELBOW	MOISTURE DRAIN	1"	CARBON STEEL

NOTES:

1. THE TANK IS TO BE POSITIVELY VENTED TO THE ATMOSPHERE AT ALL TIMES. IT IS THE RESPONSIBILITY OF THE CUSTOMER TO DETERMINE THE PROPER SIZE OF VENT TO PREVENT THE TANK FROM BEING OVER PRESSURIZED DURING FILLING AND TO PREVENT THE TANK FROM COLLAPSING DURING REMOVAL OF THE PRODUCT.
2. ALL OPENINGS, INCLUDING FACE OF FLANGES, CONDUIT ENTRANCES, THREADED OPENINGS, & MECHANICAL SURFACES SHALL BE PLUGGED OR COVERED TO PROPERLY PROTECT FROM DAMAGE AND TO KEEP CONNECTIONS & INTERNALS CLEAN & DRY DURING STORAGE & SHIPPING.
3. FLANGES INSTALLED IN THE SHELL WILL BE INSTALLED W/BOLT HOLES STRADDLING THE TANKS VERTICAL OR HORIZONTAL CENTER LINE. FLANGES INSTALLED IN THE HEADS WILL BE INSTALLED W/BOLT HOLES STRADDLING THE 0°-180° & 90°-270° CENTER LINES.
4. FACTORY TEST TANK FOR LEAKS WITH LEAK TEST BY AIR PRESSURE. APPLY AIR PRESSURE IN TANK TO 1 1/2 PSI. HOLD PRESSURE AND APPLY SEAM TEST SOLUTION TO EACH WELD TO ASSURE NO LEAKS ARE PRESENT.
5. TEST ANNULAR SPACE BY APPLYING A VACUUM EQUIVALENT TO 13-15 INCHES Hg. HOLD FOR A MINIMUM OF 12 HOURS VACUUM SHOULD MAINTAIN 13-15 Hg ±2" Hg.
6. ALL DIMENSIONS SHOWN AS NOMINAL (NOM) ARE ± 1-1/2%. ALL OTHER DIMENSIONS ARE ± 1/8" UNLESS OTHERWISE NOTED.
7. BASE THICKNESS IS **NOT** INCLUDED IN NOZZLE AND OVERALL HEIGHT DIMENSIONS.

COATINGS:

- INTERIOR:
INTERIOR TANK SURFACES SHALL BE CLEANED FREE OF RUST, SLAG, & ALL OTHER FOREIGN MATTER.
- EXTERIOR:
SHELL AND TOP:
CLEAN SURFACE FREE OF RUST, SLAG, & ALL FOREIGN MATTER.
1 ct. SHERWIN WILLIAMS FLASH PRIMER.
1.5-2.0 M.D.F.T.
1 ct. SHERWIN WILLIAMS KEM 4000.
3.0-4.0 M.D.F.T.
4.5-6.0 TOTAL M.D.F.T.
COLOR: WHITE
- EXTERIOR BOTTOM:
SURFACE PREP, PRIMED SAME AS EXTERIOR SHELL.
OVERCOAT WITH ASPHALT.

DESIGN CONDITIONS	
DESIGN PRESSURE: ATMOS.	EMPTY WEIGHT: 6,300 LBS.
DESIGN TEMP: AMBIENT	NOM. CAPACITY: 10,099 GAL.
OPERATING PRESSURE: ATMOS.	OPER. CAPACITY: ----
OPERATING TEMP: AMBIENT	RADIOGRAPHIC TEST: ----
EXTERNAL PRES: ----	CORROSION ALLOWANCE: ----
M.D.M.T: ----	SEISMIC: ----
CONTENTS: FUEL	WIND: ----
SPECIFIC GRAVITY: 1.0	MFG SPEC: UL-142

Palmer MFG. & TANK INC.		DATE: 10/24/2019
TANK NAME: FUEL STORAGE TANK	DRAWN BY: C.C.	CHECKED BY: J.K.
PALMER MFG & TANK 2814 WEST JONES AVENUE GARDEN CITY, KS 67846	S.O. NUMBER: 40742	PART NUMBER: 410110
	DRAWING NUMBER: 40742A-1	REV. 0
	SHEET: 1 OF 6	

REV	DESCRIPTION	CHK BY	DATE	DWG BY
0	RELEASED FOR PRODUCTION.	J.K.	11/11/2019	C.C.
A	PRELIMINARY SKETCH.		10/31/2019	C.C.

REVISION HISTORY